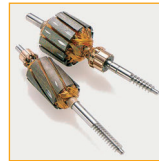




## SBM4

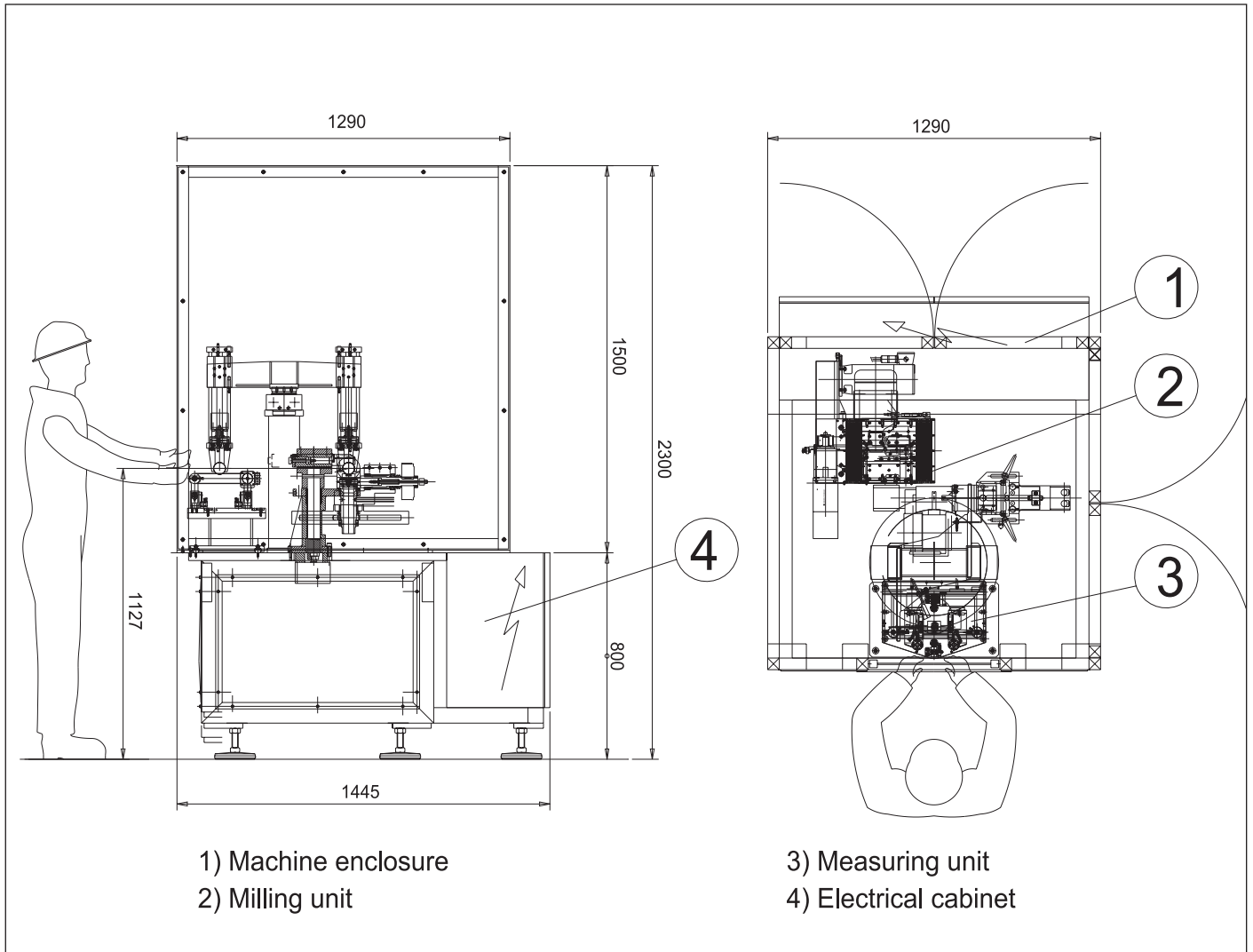
### SEMI-AUTOMATIC BALANCING MACHINE FOR ARMATURES

Semi-automatic balancing machine for armatures of electric motors. It's composed by one measuring unit, one milling units for left and right planes and pneumatic pick and place for the manipulation of the parts (from measuring unit to milling unit and vice versa). Standard configuration with milling in length up to 14 mm. The machine can be delivered on request with component or polar milling tools. Loading / unloading of the parts in the measuring unit is done by the operator.



- > Highly skilled operator not required
- > Very easy to use
- > PC based operator interface
- > Easy to maintain
- > Diagnostic and preventive maintenance programs
- > High level of repeatability and precision of the unbalance
- > Compact dimension
- > User friendly





Technical Data	Options
Workable parts:	
Max weight of the armatures:	1 Kg. expandable upon request
Diameter of the armatures:	20-60 mm expandable upon request
Stack lamination height:	10-100 mm expandable upon request
Maximum shaft length ( from the center of lamination ):	125 mm
Machine cycle time	17 sec ( measuring, milling, re-checking )
Controlled by:	PC
Measuring precision:	0.1 gmm/Kg
Balancing methods:	Polar or vectorial milling in length and depth
Machine dimension:	1290 x 1445 x h 2300 mm
	Modem
	SPC/SW and printer
	Vacuum system to remove the milling chips

Specifications may be subject to changes without notice - © 2002 By Balance Systems–Printed in Italy M0120E

Balance Systems s.p.a.  
via Ruffilli, 2/4  
20060 Pessano con Bornago  
(Milano) Italy  
Tel. +39.029 504 955  
Fax +39.029 504 977  
E-mail: info@balancesystems.it  
www.balancesystems.com



**Balance Systems**